



Pall Corporation

8300

8300 Series Filter Assembly

LOW PRESSURE FILTERS

Port Size 1½", 2" and 2½"



Filtration. Separation. Solution.SM



8300 Series Filter Assembly Technical Information

Notes and Specifications

Maximum working pressure: 28 bar

Typical fatigue pressure: 23 bar (NFPA/T2.6.1.R1 1991 Category B/90)

Proof pressure: 42 bar
Burst pressure: 145 bar typical

Temperature range: -43°C to +120°C
Nitrile Seals: -29°C to +120°C
Fluorocarbon Seals: -29°C to +120°C
60°C max in HWCF or water glycol fluids.

Bypass valve settings: 3.4 ± 0.3 bar
1.5 ± 0.2 bar

ΔP switch indicator setting: 2.4 ± 0.3 bar
1.1 ± 0.2 bar
(See PMEDEL TAP for full indicator details)

Materials: Aluminium alloy head, cover handle and tube.
Carbon steel centre post and optional mounting bracket.

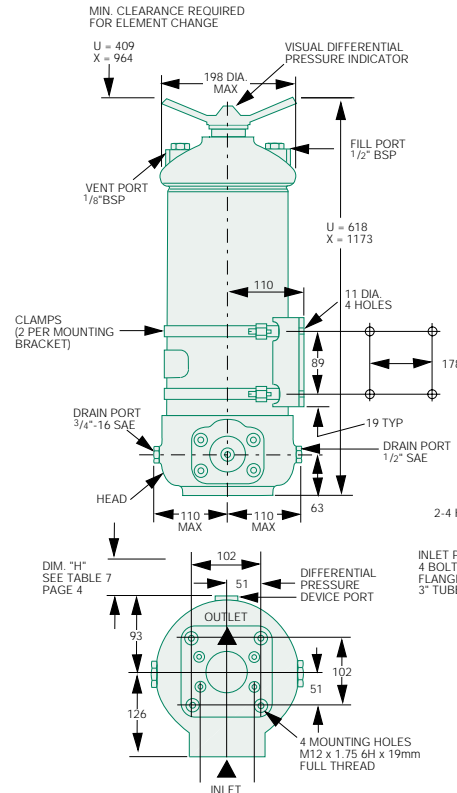
Finish:
Cover and tube: Gold anodised
Head and handle: Black anodised
Bracket: Zinc plated and passivated

Disposable filter medium: **Ultipor III**
Element collapse pressure rating per ISO 2941: 10 bar minimum

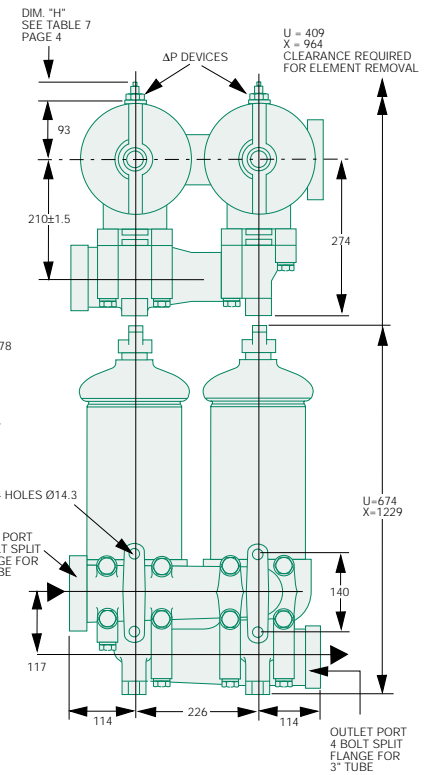
The equipment has been assessed in accordance with the guidelines laid down in The European Pressure Directive 97/23/EC and has been classified within Sound Engineering Practice S.E.P. Suitable for use with Group 2 fluids only. Consult Pall Sales for other fluid/gas group suitability.

All dimensions in mm unless otherwise stated.

8300 Standard Option

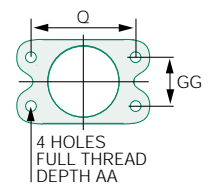


8300 Dual Manifold



Flange mounting bolt dimensions (per ISO 6162)

Filter Series	'Pall' P/N Code	Nominal Tube Size	GG	Q	Z Thread	AA Min
8300	F24	1½"	35.7	69.8	M12 x 1.75-6H	25
	F32	2"	42.9	77.8	M12 x 1.75-6H	25
	F40	2½"	50.8	88.9	M12 x 1.75-6H	25
Dual 8300	F48	3"	61.9	106.4	M16 x 2.00-6H	25



Multipass Filtration Ratings per ISO 16889

'Pall' Media Grade	Micrometre Size for B _X (c) Values*						Terminal DP Bar
	B _X (c)=2	B _X (c)=10	B _X (c)=75	B _X (c)=100	B _X (c)=200	B _X (c)=1000	
KZ	<2	<2	<2	<2	2	2.5	4
KP	<2	<2	3.1	3.3	3.8	5	4
KN	2.1	3.4	5.0	5.2	5.7	7	4
KS	3.2	5.5	8.3	8.7	9.7	12	4
KT	7.2	11	15.8	16.5	18.2	22	4

* Beta ratios are designated using the symbol (c) to signify they were measured using the ISO 16889 procedure.

8300 Series Filter Assembly Features and Benefits

Features and Benefits

Ease of element change

Forged aluminium "T" handle and single element fitted over permanent centre core allows one man to change an element in 60 seconds without tools, reducing downtime.

Optional visual and electrical differential pressure indicating devices

- Accurate and reliable indication of the need for element service.

Housing of non-welded construction

Rugged construction rated for 28 bar working pressure. Superior strength and fatigue resistance.

Filter manifolding

Standard units can be manifolded together to give full flow filtration at higher flow rates or increase dirt capacity in systems.

Single piece elements

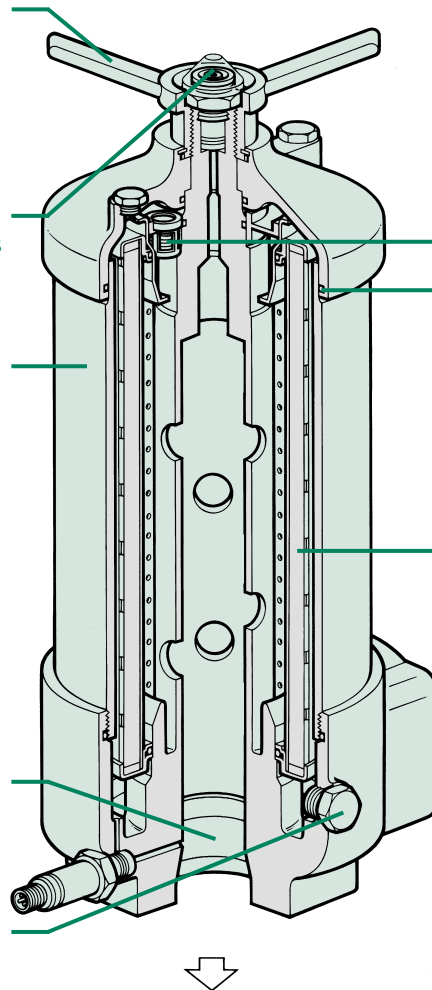
Avoids stacked element.

Port options

Port options are 1½" and 2" BSP, or 1½", 2" and 2½" ISO, 4 bolt flange.

Drain port

Drain port for draining during filter change.



Bypass valve

Full flow low inertia bypass valve mounted in the filter cap.

- Operation is independent of clogging indicator.
- Instant response to limit ΔP across element during cold starts and flow surges.

Positive sealing

Positive sealing interface using standard O-rings.

Sampling port

Sampling via the differential pressure indicator port for sampling without breaking lines.

Ultipor III elements

Ultipor III filter media

- Unique composite structure.
- Graded pore construction.
- Inert, inorganic fibres.
- Removal ratings:-
2.5, 5, 7, 12 and 22 micrometres where $(Bx_{(c)} \geq 1000)$ to ISO 16889.

Fully supported element

Construction for out-to-in flow

- High collapse strength and filtration integrity.
- Uniform diffused flow.



Pall Corporation

Pall Machinery and Equipment

A division of Pall Europe Limited
Europa House, Havant Street
Portsmouth PO1 3PD, England

(023) 9230 3303 telephone
(023) 9230 2507 fax
m&e_sales@pall.com

Because of developments in technology these data or procedures may be subject to change. Consequently we advise users to review their continuing validity annually. Part numbers quoted above are protected by the Copyright of Pall Europe Limited.

PALL, Pall and Ultipor are trade marks of Pall Corporation.
Filtration. Separation. Solution is a service mark of Pall Corporation.
©2001, Pall Europe Limited.

Filtration. Separation. Solution.SM

Visit us on the web at www.pall.com/contaminationcontrol

Pall Corporation has offices and plants throughout the world in locations including: Argentina, Australia, Austria, Belgium, Brazil, Canada, China, France, Germany, Hong Kong, India, Indonesia, Ireland, Italy, Japan, Korea, Malaysia, Mexico, the Netherlands, New Zealand, Norway, Poland, Puerto Rico, Russia, Singapore, South Africa, Spain, Sweden, Switzerland, Taiwan, Thailand, United Kingdom, United States, and Venezuela. Distributors are located in all major industrial areas of the world.

Your distributor is: