



Fast, light, economical – STRAUB-ECO-GRIP®

NEW



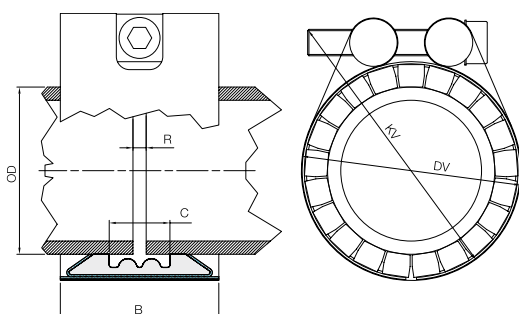
straub® 
the original

an OAliaxis company

Specifications STRAUB-ECO-GRIP®

Ø 26.9 – 168.3 mm

Components	Materials
Casing	1.4310
Screws	1.7220 ^o
Bolts	1.0737, galvanised
Anchoring ring	1.4310
Strip insert (optional)	V4A
Sealing Sleeve EPDM	Temp.: -10°C to +40°C Medium: all qualities of water, wastewater, air, solids and chemical products



Pipe OD (mm)	Clamping range (mm)	Working pressure PS (bar)	Dimension				Setting gap between pipe ends R _{max} .		Locking bolts		
			B (mm)	C (mm)	Braced		Without	With	Torque rate (Nm)	Allen head (mm)	Thread M ...
					DV (mm)	KV (mm)	Steel strip insert (mm)				
26.9	26.4 – 27.4	6	45	18	41	70	5	10	10	6	8
30.0	29.5 – 30.5	6	45	18	45	75	5	10	10	6	8
33.7	33.2 – 34.2	6	45	18	48	75	5	10	10	6	8
38.0	37.5 – 38.5	6	45	18	52	90	5	10	10	6	8
42.4	41.9 – 42.9	6	45	18	56	95	5	10	12	6	8
44.5	44.0 – 45.0	6	45	18	59	95	5	10	12	6	8
48.3	47.8 – 48.8	6	45	18	62	100	5	10	12	6	8
57.0	56.4 – 57.6	6	60	26	71	105	5	10	15	6	8
60.3	59.7 – 60.9	6	60	26	76	110	5	10	15	6	8
76.1	75.3 – 76.9	6	60	26	92	142	5	10	18	6	8
88.9	88.0 – 89.8	6	60	26	108	157	5	10	18	6	8
104.0	103.0 – 105.0	6	60	26	120	172	5	10	22	6	8
108.0	106.9 – 109.1	6	60	26	124	172	5	10	22	6	8
114.3	113.2 – 115.4	6	60	26	130	177	5	10	22	6	8
133.0	131.7 – 134.3	6	62	26	149	200	5	10	30	8	10
139.7	138.3 – 141.1	6	62	26	156	210	5	10	30	8	10
159.0	157.4 – 160.6	6	62	26	177	225	5	10	35	8	10
168.3	166.6 – 170.0	6	62	26	185	230	5	10	35	8	10

Legend:

- ^o Property class 12.9, Dacromet 500 (zinc-chromate with integrated lubricant).
- Test pressure = 1.5 x working pressure PS

Remarks:

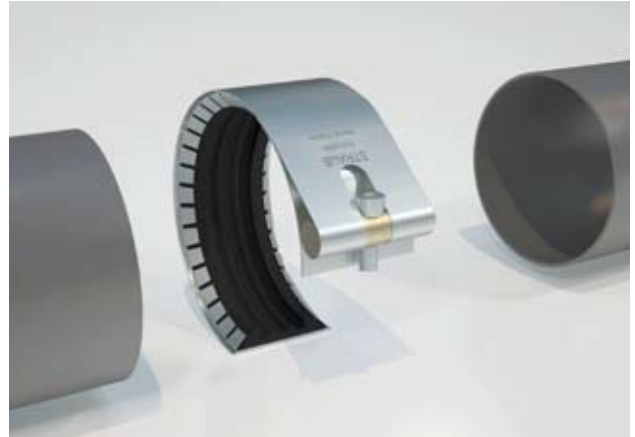
- Follow fitting/disassembly instructions.
- Strip inserts are required if gap between pipe ends is excessive, in presence of swelling, vacuum/depression, or external pressure.
- The pressure values apply to radial rigid pipes under static load (observe minimum wall-thickness (like STRAUB-GRIP-L)).
- See separate packing data for weight of the pipe couplings.

STRAUB-ECO-GRIP®

Economical – for use in lower temperature and pressure ranges.

The axial restraint STRAUB-ECO-GRIP is designated for the application on metallic pipes in low pressure stages of up to 6 bar. As a result of its innovative, patented design it makes connecting smooth ended pipes even more economical. The ready-to-use coupling is removable and reusable. And due to its slim casing it's even more space-saving.

With the STRAUB-ECO-GRIP we complement our range with an economic product which accounts for the requirements of pipe connections in low areas of stress.



Application, e.g. in the module of a water-treatment plant

STRAUB-ECO-GRIP is used where the load on the pipe system is low and appearance is also a matter of consideration; for example, for service and control lines in the industrial sector or for applications in plant engineering as well as process technology.

STRAUB-ECO-GRIP may be applied as well on plastic pipes such as PVC, ABS and CPVC.

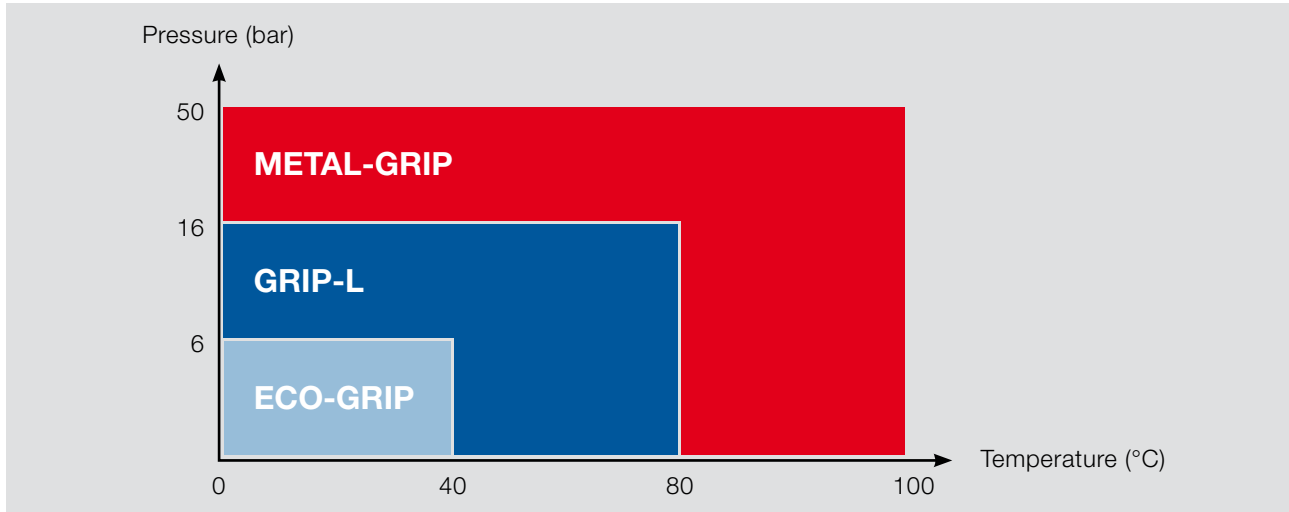
Unmatched simple and efficient pipe connections!



The STRAUB-ECO-GRIP® is a true STRAUB! It fully meets the most important requirements of a pipe connection: easy, safe, fast.

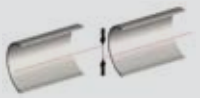
STRAUB-ECO-GRIP®

The STRAUB-ECO-GRIP is used where the pressure and temperature loads on a pipe are not high!



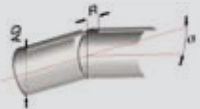
Remarks

Axial misalignment



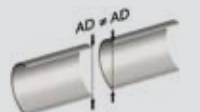
26.9– 48.3 mm	1.0 mm
57.0– 114.3 mm	1.5 mm
133.0– 168.3 mm	2.0 mm

Angular deflection



26.9– 48.3 mm	5°
57.0– 114.3 mm	3°
133.0– 168.3 mm	2°

Outside diameter differences



26.9– 48.3 mm	1.0 mm
57.0– 114.3 mm	1.0 mm
133.0– 168.3 mm	1.5 mm

Ten good reasons for the STRAUB-ECO-GRIP®

1. STRAUB-ECO-GRIP provides a tight connection in lower pressure and temperature ranges.
2. STRAUB-ECO-GRIP is an economic coupling solution.
3. Assembly is even faster thanks to the one-screw-lock.
4. Thanks to its slim casing width the STRAUB-ECO-GRIP is even lighter and more space-saving.
5. In terms of appearance, it fits harmoniously into the STRAUB-technology.
6. The STRAUB-ECO-GRIP is removable and reusable.
7. It has no loose parts.
8. The assembly is intuitively easy.
9. STRAUB-ECO-GRIP can be fitted with standard tools (torque wrench).
10. STRAUB-ECO-GRIP is a Swiss quality product.

We reserve the right to make technical modifications.